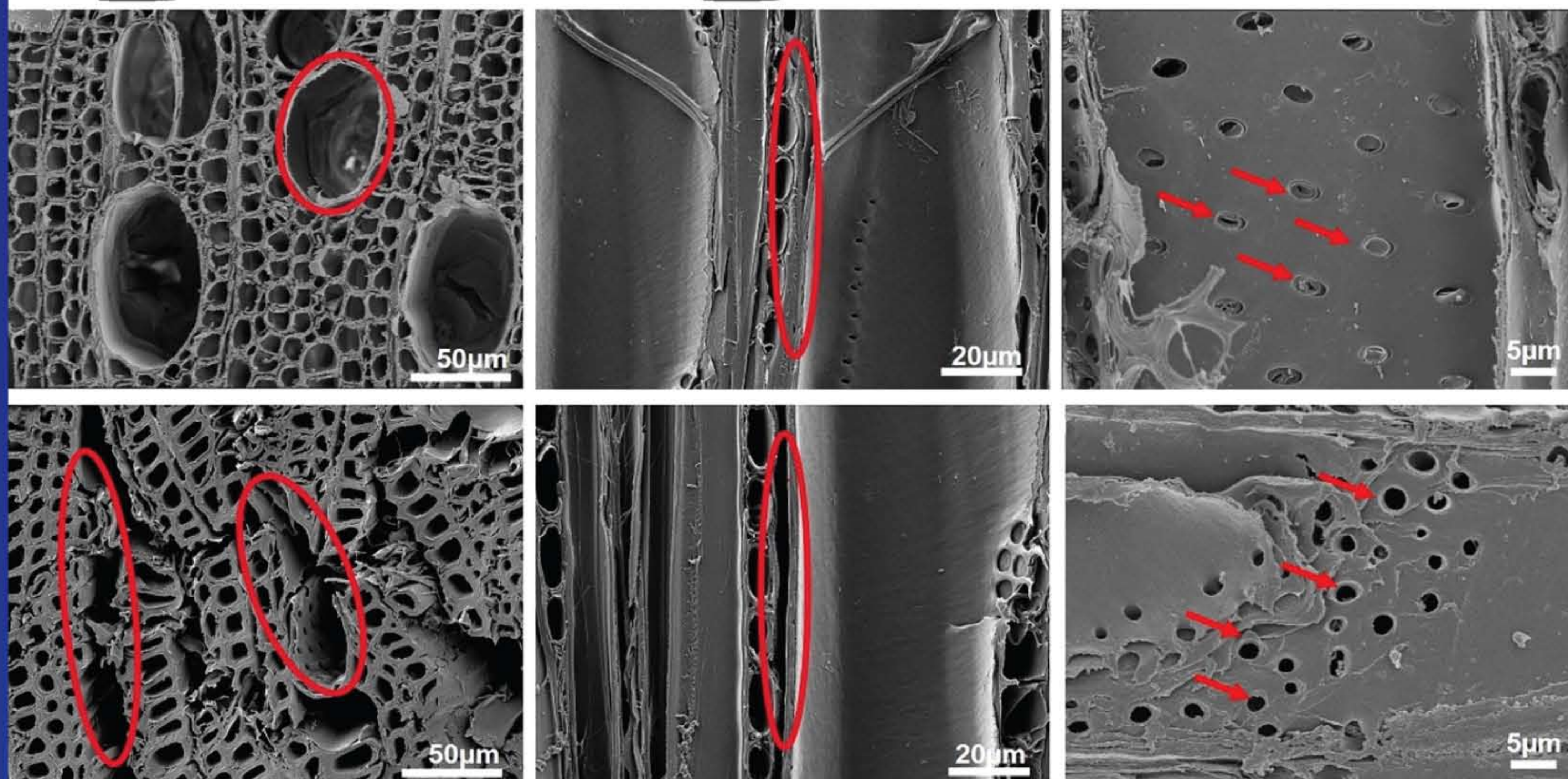
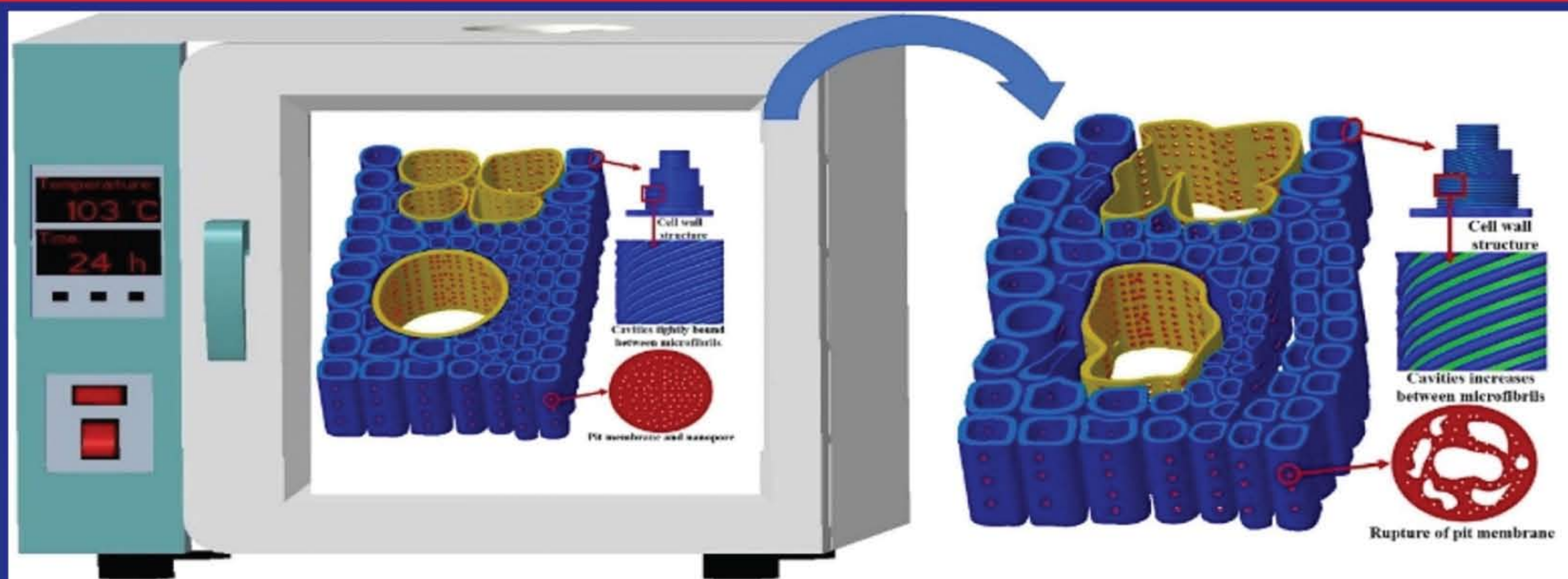


SCIENCE OF ADVANCED MATERIALS

Editor-in-Chief: Prof. Ahmad Umar



COVER

Characteristics of Pore Structure in the Evaporated Stage of Wood-Derived Carbon

Tian-Shu Yang, Jin-Bo Hu, Zhao-Yang Yu, Gong-Gang Liu, Yuan Liu, Ming-Long Zhang, Yuan-Yuan Liao, and Shan-Shan Chang



AMERICAN
SCIENTIFIC
PUBLISHERS